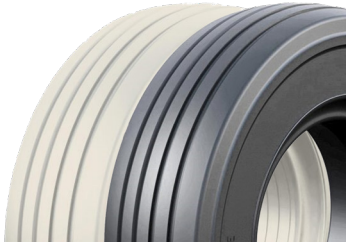




SOLID PNEUMATIC DURAECO FORKLIFT SERIES

Flat proof solid tires, so no more downtime period.



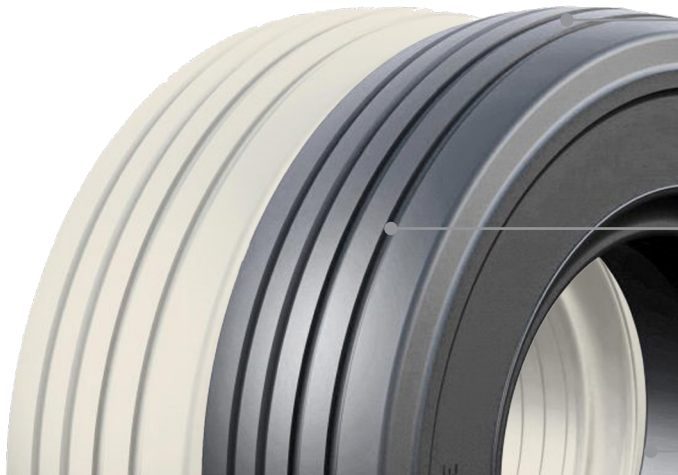
SOLID I PATTERN TIRES

For All Forklift Models



SENTRY TIRE SOLID PNEUMATIC DURAECO FORKLIFT SERIES

SOLID I PATTERN TIRES | Perfect Balance of Tire Life and Ride Quality



Applications

- Ideal machine applications: forklift, gold carts, and luggage carts

Deep Tread Design

- The deep tread design allows for strong grip during outdoor use, low rolling resistance, and high ROI

Wheel Fitment

- Wheels available for all machine models.

I Pattern Features:

- Reinforced sidewall enhances durability and impact resistance.
- Solid wheel base construction is designed for increased loads, reinforced beads locks wheels in place (anti-slip), wheel base is made of softer compound which reduces driver fatigue.
- Ideally suited for long distance operations, air cargo application, and smooth concrete surfaces.

TIRE SIZE	RIM SIZE (IN)	TIRE WIDTH (IN)	OVERALL DIAMETER (IN)	LOAD CAPACITY (LBS)	WEIGHT (LBS)
4.00 - 8					
4.00 - 8					
4.00 - 8					
4.80 - 8					
4.80 - 8					
16 x5 -9					
3.50 - 5					
3.50 - 5					

*For more information and a full list of available sizes, please visit www.sentrytire.com

Sentry Tire

1440 E. Cedar St. Ontario, CA 91761
 PH: (888) 858-8892 | FAX: (909) 230-5553
 Info@sentrytire.com

